

## 1 RETROFIT ROOF STRUCTURAL CROSS SECTION

1/4" = 1'-0"  
RE: 1S200, 1S300, 1S400

NOTE CAREFULLY:  
REFER TO ARCHITECTURAL DRAWINGS FOR ALL DETAILS AT FASCIAE, EAVES, RIDGES, RAKES, VERTICAL SURFACES, ETC., AND FOR ALL DETAILS OF ROOFING, SIDING, SOFFITS, AND FLASHINGS, AND OTHER FINISHES. THIS DRAWING IS SOLELY FOR STRUCTURAL FRAMING AND DIMENSIONAL ARRANGEMENT OF COLUMNS, SLOPED CEES, Z-PURLINS, AND BRACING.

ROOF RETROFIT MEMBERS ARE CONNECTED WITH #12 TEK SCREWS, NUMBER AND SPACING AS INDICATED IN THE TYPICAL LOCATIONS SHOWN. ALL SIMILAR CONNECTIONS TO BE AS SHOWN.

Z4x2 1/2x16 GA. PURLINS SPACED AT 4'-0"OC MAXIMUM, FASTEN TO C6x2 1/2x16 GA. RAFTERS WITH 2 #12 TEK SCREWS EACH LOCATION

C4x2 1/2x16 GA. HORIZONTAL BRACE

C4x4x16 GA. RETROFIT COLUMN BASE ATTACHMENT DETAIL 2S100, A

EXISTING STEEL ROOF JOISTS SPACED PER PLAN (4'-0"OC)

EXISTING ROOF DECK NOTE: (FIELD VERIFY) BUILT-UP ROOFING ON RIGID INSULATION ON LIGHTWEIGHT INSULATING CONCRETE (VARYING THICKNESS) ON CORRUGATED DECKING. THE EXISTING ROOF STRUCTURE IS FLAT (FIELD VERIFY)

EXISTING PRECAST CONCRETE TILT-UP WALL PANEL

EXISTING FINISH FLOOR ELEVATION = DATUM (0'-0")

CONTRACTOR NOTE: FIELD VERIFY ALL DIMENSIONS OF EXISTING STRUCTURAL ELEMENTS.

## 5 SECTION

1/4" = 1'-0"  
RE: 1S200, 1S300, 1S400

NOTE CAREFULLY:  
REFER TO ARCHITECTURAL DRAWINGS FOR ALL DETAILS AT FASCIAE, EAVES, RIDGES, RAKES, VERTICAL SURFACES, ETC., AND FOR ALL DETAILS OF ROOFING, SIDING, SOFFITS, AND FLASHINGS, AND OTHER FINISHES. THIS DRAWING IS SOLELY FOR STRUCTURAL FRAMING AND DIMENSIONAL ARRANGEMENT OF COLUMNS, SLOPED CEES, Z-PURLINS, AND BRACING.

ROOF RETROFIT MEMBERS ARE CONNECTED WITH #12 TEK SCREWS, NUMBER AND SPACING AS INDICATED IN THE TYPICAL LOCATIONS SHOWN. ALL SIMILAR CONNECTIONS TO BE AS SHOWN.

Z4x2 1/2x16 GA. PURLINS SPACED AT 4'-0"OC MAXIMUM, FASTEN TO C6x2 1/2x16 GA. RAFTERS WITH 2 #12 TEK SCREWS EACH LOCATION

C4x2 1/2x16 GA. HORIZONTAL BRACE

C4x4x16 GA. RETROFIT COLUMN BASE ATTACHMENT DETAIL 2S100, A

EXISTING STEEL ROOF JOISTS SPACED PER PLAN (4'-0"OC)

EXISTING ROOF DECK NOTE: (FIELD VERIFY) BUILT-UP ROOFING ON RIGID INSULATION ON LIGHTWEIGHT INSULATING CONCRETE (VARYING THICKNESS) ON CORRUGATED DECKING. THE EXISTING ROOF STRUCTURE IS FLAT (FIELD VERIFY)

EXISTING PRECAST CONCRETE TILT-UP WALL PANEL

EXISTING FINISH FLOOR ELEVATION = DATUM (0'-0")

CONTRACTOR NOTE: FIELD VERIFY ALL DIMENSIONS OF EXISTING STRUCTURAL ELEMENTS.

## 6 SECTION

1/4" = 1'-0"  
RE: 1S200, 1S300, 1S400

NOTE CAREFULLY:  
REFER TO ARCHITECTURAL DRAWINGS FOR ALL DETAILS AT FASCIAE, EAVES, RIDGES, RAKES, VERTICAL SURFACES, ETC., AND FOR ALL DETAILS OF ROOFING, SIDING, SOFFITS, AND FLASHINGS, AND OTHER FINISHES. THIS DRAWING IS SOLELY FOR STRUCTURAL FRAMING AND DIMENSIONAL ARRANGEMENT OF COLUMNS, SLOPED CEES, Z-PURLINS, AND BRACING.

ROOF RETROFIT MEMBERS ARE CONNECTED WITH #12 TEK SCREWS, NUMBER AND SPACING AS INDICATED IN THE TYPICAL LOCATIONS SHOWN. ALL SIMILAR CONNECTIONS TO BE AS SHOWN.

Z4x2 1/2x16 GA. PURLINS SPACED AT 4'-0"OC MAXIMUM, FASTEN TO C6x2 1/2x16 GA. RAFTERS WITH 2 #12 TEK SCREWS EACH LOCATION

C4x2 1/2x16 GA. HORIZONTAL BRACE

C4x4x16 GA. RETROFIT COLUMN BASE ATTACHMENT DETAIL 2S100, A

EXISTING STEEL ROOF JOISTS SPACED PER PLAN (4'-0"OC)

EXISTING ROOF DECK NOTE: (FIELD VERIFY) BUILT-UP ROOFING ON RIGID INSULATION ON LIGHTWEIGHT INSULATING CONCRETE (VARYING THICKNESS) ON CORRUGATED DECKING. THE EXISTING ROOF STRUCTURE IS FLAT (FIELD VERIFY)

EXISTING PRECAST CONCRETE TILT-UP WALL PANEL

EXISTING FINISH FLOOR ELEVATION = DATUM (0'-0")

CONTRACTOR NOTE: FIELD VERIFY ALL DIMENSIONS OF EXISTING STRUCTURAL ELEMENTS.

## 2 SECTION

1/4" = 1'-0"  
RE: 1S200, 1S300, 1S400

NOTE CAREFULLY:  
REFER TO ARCHITECTURAL DRAWINGS FOR ALL DETAILS AT FASCIAE, EAVES, RIDGES, RAKES, VERTICAL SURFACES, ETC., AND FOR ALL DETAILS OF ROOFING, SIDING, SOFFITS, AND FLASHINGS, AND OTHER FINISHES. THIS DRAWING IS SOLELY FOR STRUCTURAL FRAMING AND DIMENSIONAL ARRANGEMENT OF COLUMNS, SLOPED CEES, Z-PURLINS, AND BRACING.

ROOF RETROFIT MEMBERS ARE CONNECTED WITH #12 TEK SCREWS, NUMBER AND SPACING AS INDICATED IN THE TYPICAL LOCATIONS SHOWN. ALL SIMILAR CONNECTIONS TO BE AS SHOWN.

Z4x2 1/2x16 GA. PURLINS SPACED AT 4'-0"OC MAXIMUM, FASTEN TO C6x2 1/2x16 GA. RAFTERS WITH 2 #12 TEK SCREWS EACH LOCATION

C4x2 1/2x16 GA. HORIZONTAL BRACE

C4x4x16 GA. RETROFIT COLUMN BASE ATTACHMENT DETAIL 2S100, A

EXISTING STEEL ROOF JOISTS SPACED PER PLAN (4'-0"OC)

EXISTING ROOF DECK NOTE: (FIELD VERIFY) BUILT-UP ROOFING ON RIGID INSULATION ON LIGHTWEIGHT INSULATING CONCRETE (VARYING THICKNESS) ON CORRUGATED DECKING. THE EXISTING ROOF STRUCTURE IS FLAT (FIELD VERIFY)

EXISTING PRECAST CONCRETE TILT-UP WALL PANEL

EXISTING FINISH FLOOR ELEVATION = DATUM (0'-0")

CONTRACTOR NOTE: FIELD VERIFY ALL DIMENSIONS OF EXISTING STRUCTURAL ELEMENTS.

## 3 SECTION

1/4" = 1'-0"  
RE: 1S200, 1S201 1S300, 1S301, 1S400, 1S401

NOTE CAREFULLY:  
REFER TO ARCHITECTURAL DRAWINGS FOR ALL DETAILS AT FASCIAE, EAVES, RIDGES, RAKES, VERTICAL SURFACES, ETC., AND FOR ALL DETAILS OF ROOFING, SIDING, SOFFITS, AND FLASHINGS, AND OTHER FINISHES. THIS DRAWING IS SOLELY FOR STRUCTURAL FRAMING AND DIMENSIONAL ARRANGEMENT OF COLUMNS, SLOPED CEES, Z-PURLINS, AND BRACING.

ROOF RETROFIT MEMBERS ARE CONNECTED WITH #12 TEK SCREWS, NUMBER AND SPACING AS INDICATED IN THE TYPICAL LOCATIONS SHOWN. ALL SIMILAR CONNECTIONS TO BE AS SHOWN.

Z4x2 1/2x16 GA. PURLINS SPACED AT 4'-0"OC MAXIMUM, FASTEN TO C6x2 1/2x16 GA. RAFTERS WITH 2 #12 TEK SCREWS EACH LOCATION

C4x2 1/2x16 GA. HORIZONTAL BRACE

C4x4x16 GA. RETROFIT COLUMN BASE ATTACHMENT DETAIL 2S100, A

EXISTING STEEL ROOF JOISTS SPACED PER PLAN (4'-0"OC)

EXISTING ROOF DECK NOTE: (FIELD VERIFY) BUILT-UP ROOFING ON RIGID INSULATION ON LIGHTWEIGHT INSULATING CONCRETE (VARYING THICKNESS) ON CORRUGATED DECKING. THE EXISTING ROOF STRUCTURE IS FLAT (FIELD VERIFY)

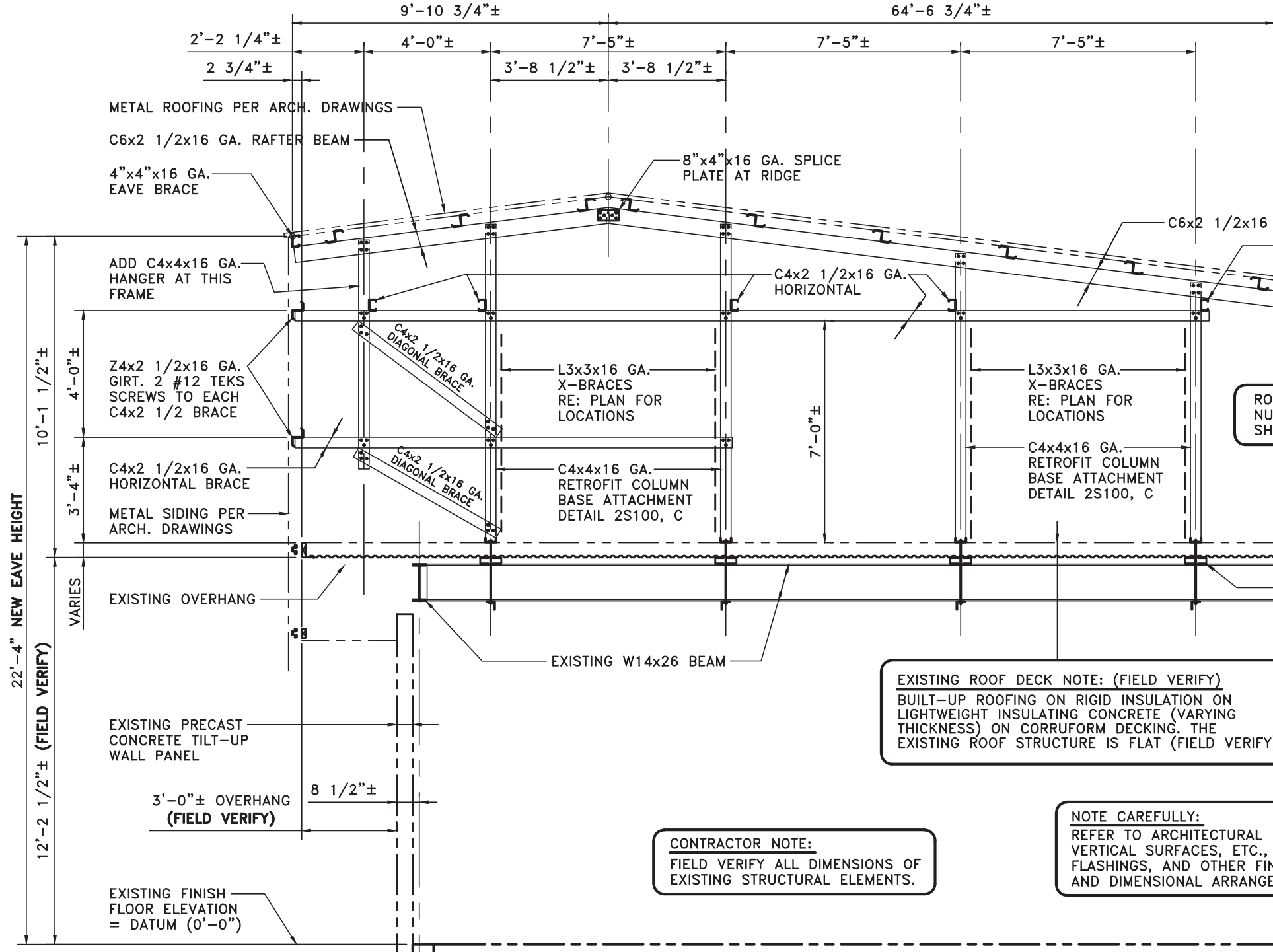
EXISTING PRECAST CONCRETE TILT-UP WALL PANEL

EXISTING FINISH FLOOR ELEVATION = DATUM (0'-0")

CONTRACTOR NOTE: FIELD VERIFY ALL DIMENSIONS OF EXISTING STRUCTURAL ELEMENTS.

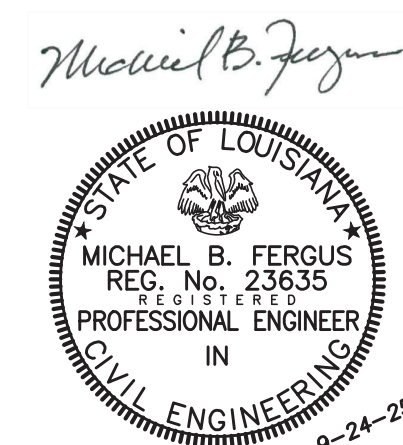
## 4 SECTION

1/4" = 1'-0"  
RE: 1S201, 1S301, 1S401



## 7 DETAIL

1/4" = 1'-0"  
RE: 1S300, 1S400



FERGUS ENGINEERING  
CORPORATING STRUCTURE, INC.  
608 HOLA DRIVE  
LAHARRE, LA 70072  
504.881.4600  
www.fergusengineering.com